

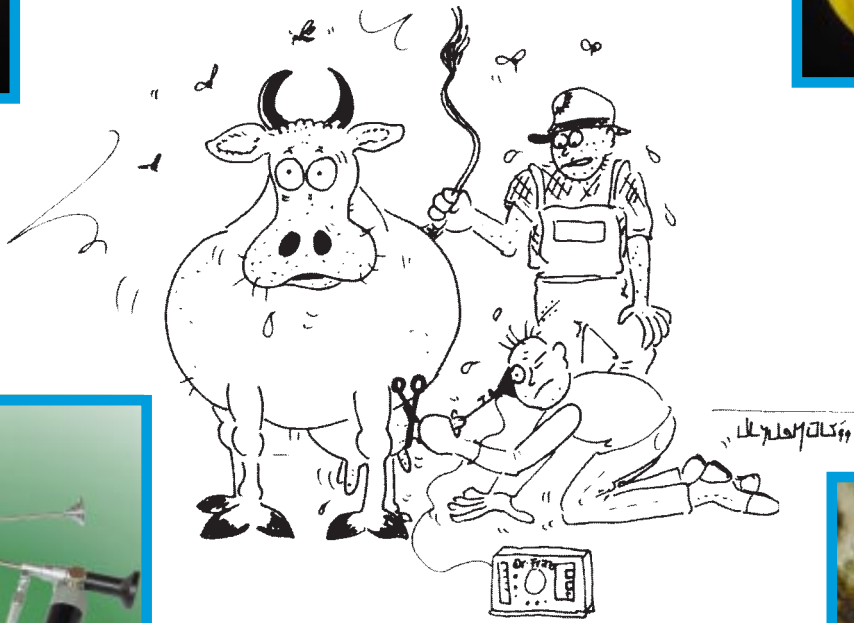
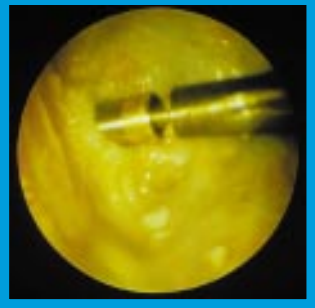
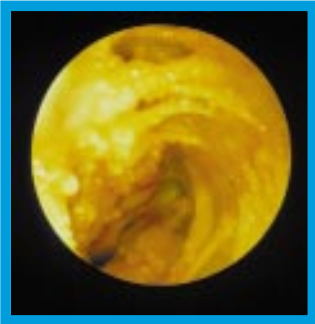


Endoscopes & Video Systems

Vet-Info 15-2 E

Bovine

Equipment for endoscopic diagnosis and minimal invasive treatment of teat disorders



Dr. Maximilian Medl 1994

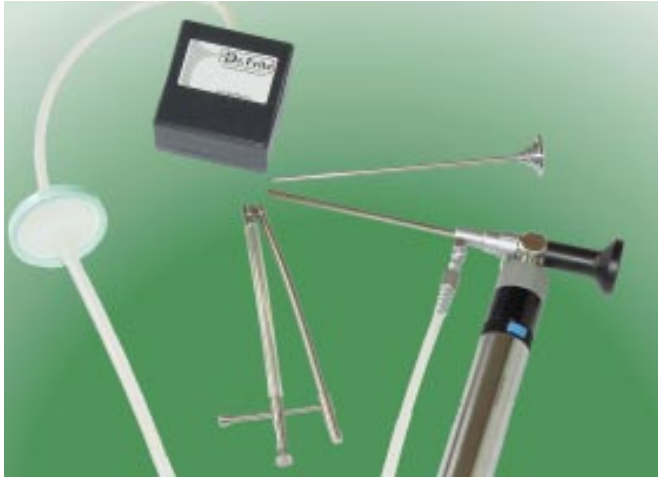
Teat Endoscopy in Dairy Cattle



Treatment of teat disorders using minimal invasive techniques with teat endoscopy

The use of a lateral portal techniques in teat endoscopy by **Maximilian Medl** und **Klaus Querengässer** in 1994 has created a renaissance in research into teat disorders and treatment. Following their findings specific endoscopic equipment was developed to improve diagnosis and treatment.

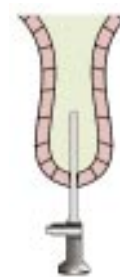
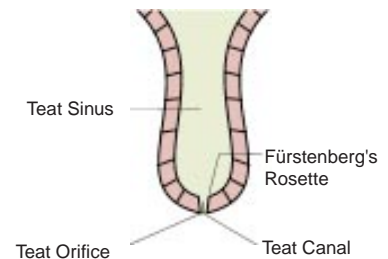
Lateral perforation of the teat wall enables easy examination of the whole teat lumen and more importantly the teat canal. Surgery is also possible on the patient whilst standing under field conditions with access via the teat canal. Our basic set contains all the necessary components for minimal invasive surgery. The specially designed thin diameter scope enables a clear and bright image. Using both a battery operated light handle with a scope and a battery operated inflation pump are ideal for field use. For special cases we can also supply a halogen cold light source.



A further new generation of instruments completes the set: first a teat clamp to enable endoscopy, secondly a new teat knife with disposable blades and thirdly our stenosis cutter acc. to Eisenhut. We supply a suitable transport case to protect the scope and the instruments with additional parts. With our new **Keratelin®** products we offer excellent and professional after care service.

Basic Equipment

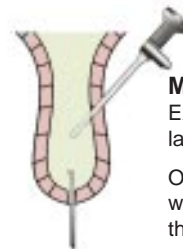
- T141-3000** **Wide angle telescope, 0°**, large image technology, OD: 3mm, WL: 14cm, standard light cable connectors
**Special robust construction for use in field practice
- S140-3001** **Examination trocar**, OD: 3,4mm, WL: 12cm, for telescope T140-3000, stopcock including sheath and trocar only
- ZB-5-3** **Inflation pump**, battery operated, incl. 1metre silicon tube with Luer Lock incl. air filter, delivered without batteries
- ZB-5-9A** **Spare batteries**, type: mignon, 1,5V, pg. with 2 pcs.
- Z-44-85** **Special teat clamp**, with ratchet, size 12cm, compact construction
- ZB-5-1** **Light handle**, battery operated, 2,5 V Xenon bulb, comp. to Dr. Fritz & Wolf, for 2x1,5V baby cells, delivered without batteries
- ZB-5-10** **Spare batteries**, type: baby, 1,5V package with 2 pcs., alkaline (without picture)
- ZB-5-11** **Spare lamp 2,5VDC**, for light handle type Dr. Fritz ZB-5-1, package with 2 pcs. (without picture)



Conventional Technique:

Examination via teat canal

An examination of the teat sinus is possible but you can not see the Fürstenberg's Rosette, where 95% of the internal lesions occur. Parallel treatment through the teat canal is difficult.



Medl-Technique:

Examination and treatment via lateral teat wall

Only lateral perforation of the teat wall enables easy examination of the whole teat lumen and especially of the Fürstenberg's Rosette.

Via teat canal treatment is possible under endoscopic control.

Latest Teat Instruments

The new standard

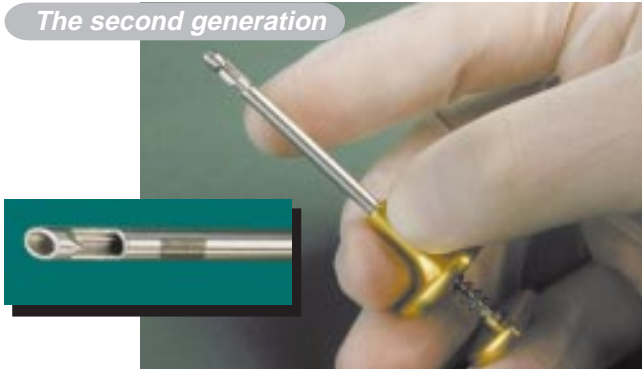


Teat knife acc. to EBNER

- handle with disposable blade
- blades easy to change and safe
- for each large animal practice

- Z-55** Teat knife acc. to Dr. Ebner, pat. locking system, handle and 1 blade (disposable)
- Z-55-2** Teat knife acc. to Dr. Ebner, pat. locking system, cons. of: handle (Z-55) & 10 spare blades (Z-55-1)
- Z-55-1** Scalple blades f. teat knife, 10pcs/b individually packed, sterile, comp. to handle type Z-55

The second generation



Stenosis cutter acc. to EISENHUT

- high quality tissue punch
- easy to clean

- Z-47-030** Stenosiscutter acc. to EISENHUT, small
OD: 3mm, WL: 4,5cm,
color code: metal
- Z-47-033** Stenosiscutter acc. to EISENHUT, large
OD: 3,3mm, WL: 4,5cm,
color code: gold

- Z-40-05** **Special teat probe** for teat canal measurement and palpation
- DE-5-17** **Cleaning brush** for small cannulas with ID: 2-4mm, length 17cm
- DE-10-402** **Disinfection solution** flex. endoscopes and instruments, specially developed, concentrated, 5 litres, (without picture)



Recommended set for field practice



"Mini-Plus" basic set with battery handle, air pump, new instruments, complete in transportation case consisting of:

- T141-3000** Wide angle telescope, 0°, OD: 3mm, WL: 14cm,
S140-3001 Examination trocar, OD:3,4mm,WL:12cm
ZB-5-1 Light handle, battery operated, 2,5 V
ZB-5-10 Spare batteries, type: baby, 1,5V pg. with 2 pcs.
ZB-5-3 Inflation pump, battery operated,
ZB-5-9A Spare batteries, type: mignon, 1,5V
Z-40-05 Special teat probe
Z-44-85 Special teat clamp, with ratchet, size 12cm
Z-55-2 Teat knife acc.to Dr.Ebner,
Z-47-300 Stenosiscutter set 3,0&3,4mm
DE-5-17 Cleaning brush, small,17cm
DE2014-41 Sterilizing & storing case, 200x140x40mm
K-4530-10 Special transportation case, for teat endoscopy

Please ask us or your customer service for a special quotation for your practice.

Cold Light Sources

Halogen Cold Light Source

- for video recording
- universal in use
- ideal for field practice
- robust
- for flexible bronchoscopes



LED Light handle

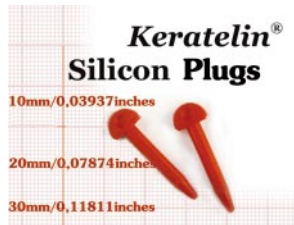


- H150-5-31** Halogen cold light source, 150W, comp. to Olympus, small, portable, Halogen mirror lamp (H150-5-E) light intensity continuously adjustable, built-in air pump, 4,6kg 115/230VAC adjustable, 50/60Hz
- K-4231-16** Transportation case, 46x37x17cm for cold light source H150-5-2/21 (without picture)
- OW-48-230** Fibre light cable, 4,8mm, 2,3m, O/W, unit side comp.to Olympus, endoscope side comp.to R. Wolf, autoclavable (without picture)
- LED-7-207** LED battery light handle, large complete, consisting of: (LED-7-27) incl. Lithium battery (LED-7-22), charger (LED-7-25)

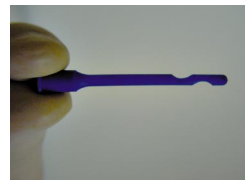
Keratelin®-Products

Keratelin teat-insert, Tape

Z-99024-U



Z-99088



Z-99055



Z-99027

- Z-99024-U** KERATELIN "Suture Plug" the EBNER wax teat dilator, OD:3mm,box 24pc ***the revolution in teat care***
- Z-99088** KERATELIN "Silicon Plugs", 3,5mm, red, the soft teat dilator, pg with 20pcs
- Z-99055** KERATELIN milk canula, disposable,100 pc, individually packed, y-sterile
- Z-99027** KERATELIN "P2-Cath" acc. to Schlederer, – the teat permanent catheter – , 8 pcs, LLw, OD: 2,7mm, individually packed, sterile