

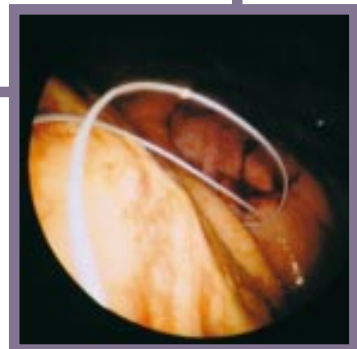
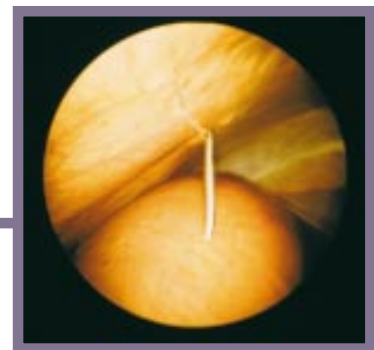
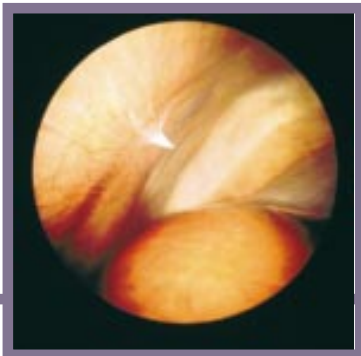
Dr. Fritz[®]
GmbH

Endoscopes and Video Systems

Vet-Info 15-5 E

Bovine, Large Animals

Equipment for laparoscopic repositioning
and fixation of abomasal displacement (acc to Dr. Janowitz),
accessories for standing upright position (acc to Dr. Christiansen)



Bovine Laparoscopy

Dr. Fritz, LLC · Louisville, KY/USA · www.dr-fritz.com · info@dr-fritz.com

Dr. Fritz GmbH · Tuttlingen / Germany · www.dr-fritz.de · info@dr-fritz.de

Dr. Fritz

Set for laparoscopic repositioning and fixation of abomasal displacement in cattle acc. to Dr. Janowitz

This set allows the veterinary surgeon to use a quick, and extremely safe technique with no medication requirements as well as quick recovery of the patient. The procedure can be carried out in the field under all circumstances. The equipment is easy to handle and to clean. The basic element in the set is a specially developed robust scope with a length designed specifically for this purpose. Instruments are specifically designed for use in large animal field situations and stored in a practical transport case to guarantee a long life. In research programs it emerged that the traditional toggle system often offered inadequate strength and resulted in either rupture of the suture material or breakage of the plastic toggle material. This has led to the development of a new safety toggle with a 90 cm long break safe double suture.



SET-LAB-231 Set for endoscopic LDA/RDA repositioning.

Basic set including transportation case, consisting of:

- scope, LED-battery light handle spare lamp
- suture grasping forceps, long
- inflation and puncture needle
- trocars and trocar cannulas
- abomasal puncture system
- safety toggle pins
- sterilizing and storage tray
- inflation pump
- cleaning brushes

SET-LAB-232 Set see above, yet with Spieker acc. to Christiansen

for the procedure in a standing upright position (see page: Lap-R-4)

fully dismantable
magnetic flap valve
system



Telescope, Trocars

T420-8000V Wide angle telescope, OD: 8 mm, 0°, large image and safety version, for large animal practices

234-200V Cannula only, magnetic valve, stopcock, ID: 8 mm, WL: 12 cm, (without picture)

234-166V Trocar only, special sharp tip, for cannulas ID: 8 mm, WL: 12 cm, (without picture)

231-201V Cannula only, magnetic valve, for trocars, ID: 5,5 mm, WL: 12 cm

231-166V Trocar only, special sharp tip, for cannulas ID: 5,5 mm, WL: 12 cm

Accessories:

- | | |
|---------|--|
| 234-211 | Spare sealing caps, for trocar cannula 8 mm, p. of 10 pcs. |
| 231-211 | Spare sealing caps, for trocar cannula 5,5 mm, p. of 10 pcs. |
| 230-215 | Spare magnetic valve flap 8/10 mm, p. of 2 pcs. |
| 231-215 | Spare magnetic valve flap 5,5 mm, p. of 2 pcs. |
| DE-6-21 | Cleaning brush for tubes, size: 5 to 7 mm, 20 cm |
| DE-9-25 | Cleaning brush for tubes, size: 7 to 10 mm, 25 cm |



T420-8000V

- easy to use
- easy to clean
- long life span
- special trocar tip

Instruments, Accessories



Safety toggle

- robust and break resistant (material)
- 90 cm double suture material
- increased stiffness of suture material to assist placement in abdomen
- with markings along the suture

LO-40-04 Safety toggle pin acc. to Dr. Janowitz, for laparoscopic abomasal fixation, 5 pcs.

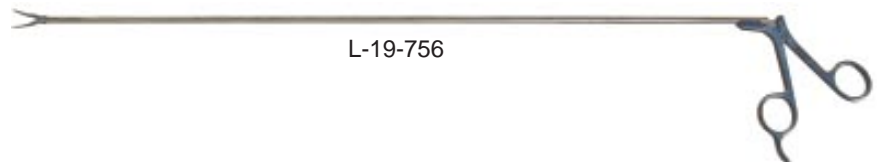
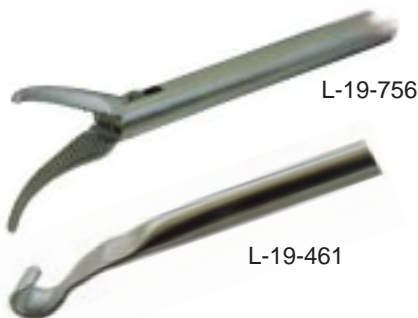
Needle, puncture system

TR-22-301 Abomasal puncture needle, OD: 2,2 mm, 30 cm

TR-40-350 Toggle placing trocar acc to Janowitz, OD: 5 mm, 35 cm, consisting of: cannula only (TR-40), trocar only (TR-40-3), obturator (TR-40-35)



Suture grasping forceps



L-19-756 Suture grasping & preparation forceps acc. to Dr. Janowitz, specific version, OD: 5,5 mm, WL: 51 cm, cleaning connector

L-19-746 Suture and preparation forceps acc. to Dr. Janowitz, specific version, OD: 5,5 mm, WL: 33 cm, cleaning connector
– short version: optional –

L-19-461 Suture grasping hook acc. to Dr. Meyer, 5 mm, 40 cm

Accessories – in addition to standard set



531.01H05V Metzenbaum scissors, 5 mm, 33 cm, curved insulated, dismantable, rotatable, plastic handle

531.60H01V Biopsy forceps, 5 mm, 33 cm, double action jaws, insulated, dismantable, rotatable

DE-3-456 Cleaning brush, for long tubes
ID: 2,5-5 mm, 6 pcs. (without picture)

Light sources – halogen – LED

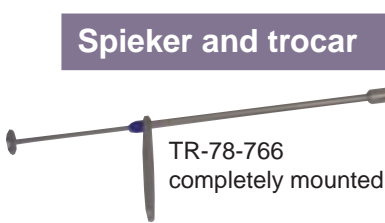


H20-001 Hand cold light source, 20 W., portable for direct coupling to telescope, compatible to Dr.Fritz, incl. transformer

H20-001E Spare lamp, halogen 20 W/8VAC for light source H20-001

LED-7-207 LED-Battery Light handle, 5500°K, complete with LED-Light handle, battery, charger

Spieker and trocar



for laparoscopic repositioning of LDA, in a standing upright position

Janowitz and Christiansen, Giessen 2003



TR-78-766 **Christiansen's spieker** for large animals 1 m, consisting of:
outer tube TR-78-763
lancet TR-78-761,
inner tube TR-78-762

TR-13-145 **Working trocar**, ID: 13 mm, 14 cm incl. cannula (TR-145), sharp trocar (TR-13)



Soak basin

DE-10-426 **Soak basin** for chemical solution disinfection consisting of basin /perforated)

Suction & inflation pump



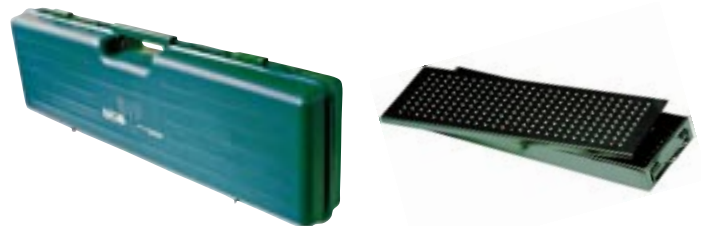
H160-2S **Veterinary suction & irrigation pump**, complete with 2 bottles (suction/ water) 1 litre each, silicon tubing set, vacuum: 11 l/min, 0-08bar, pressure: 0-0,7bar (up to 140mmHg), fully adjustable, 230VAC;50/60Hz, incl. filters

H150-1-1 **Inflation pump**, small, 5 litre/min max. 0,25bar, **230VAC**;50/60Hz incl. silicon tube, LL (m)

H150-1-1X **Inflation pump**, small, 5 litre/min max. 0,25bar, **115VAC**;50/60Hz incl. silicon tube, LL (m), (without picture)

Transportation case and instruments container

for safe storage of your cold light source, instruments and telescopes



DE4014-60 **Sterilizing and storing case**, stainless steel, lid perforated with textile filter size: 40x11x6 cm

K-8427-11 **Case for storage and transport of telescopes and instruments**, size: 84x27x11 cm