

Otoscopy  
Rhinoscopy

# Dr. Fritz®

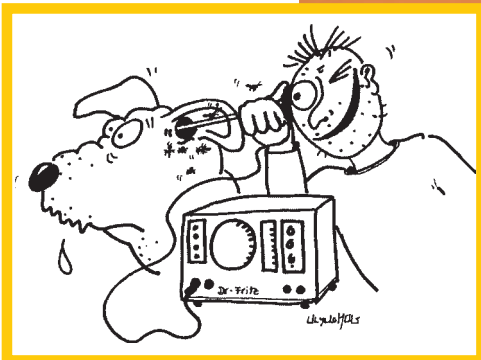
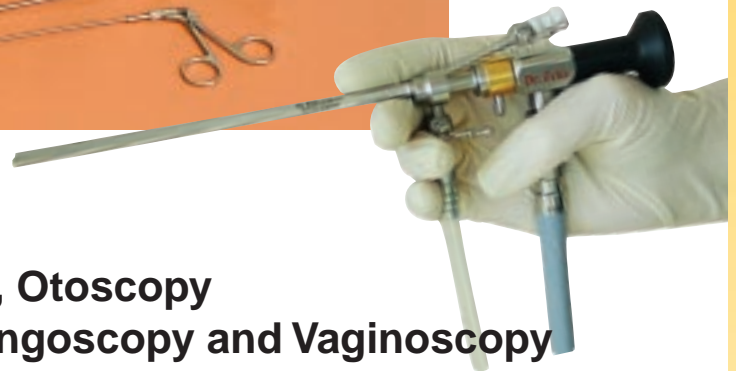
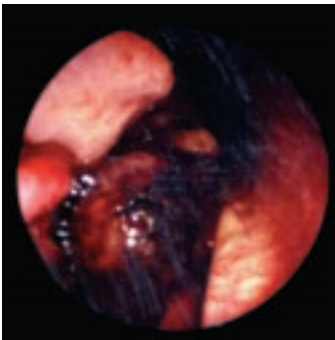
GmbH

Endoscopes and Video Systems

Vet-Info 13-6 E

## Dogs, Cats, Birds and Exotic Species

Endoscopic Equipment for the small animal practice, multiple applications



Rhinoscopy, Otoscopy  
Retro Pharyngoscopy and Vaginoscopy  
Endoscopy of Exotic Species

Dr. Fritz GmbH · Tuttlingen / Germany · [www.dr-fritz.de](http://www.dr-fritz.de) · [info@dr-fritz.de](mailto:info@dr-fritz.de)

Dr. Fritz, LLC · Louisville, KY / USA · [www.dr-fritz.com](http://www.dr-fritz.com) · [info@dr-fritz.com](mailto:info@dr-fritz.com)

**Dr. Fritz**

## Basic Equipment for the Small Animal Practice

– multiple applications –



The basic component of the latest Dr. Fritz rhinoscopy and otoscopy set is the small 2,7 mm rigid telescope. Mostly produced with the recommended 0° (30°) direction of vision. The scope is useful in most areas of ENT work, in gynaecology, in birds and exotic animals. The specially designed sheath has an integrated working channel allowing the use of biopsy and grasping forceps under visual control.

Technically the set is easy to handle and easy to clean. Flushing and suction is possible at any time. If you are using the new direct coupling system (Video-Compact-System) you can choose the latest generation of 2,7 m direct coupling scope to use the single cable technology. The additional small transportation case protects the instruments and helps to prevent losing single parts.

### Large Image Telescope, 2,7 mm

Basic component, multiple applications

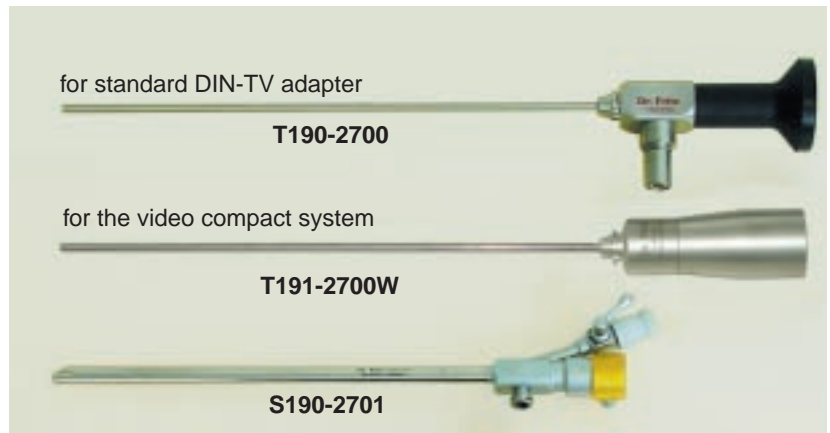
#### T190-2700

Wide angle telescope, 0°, OD: 2,7 mm, WL: 19 cm, standard light cable connectors

– with new large image system –

#### T190-2700W

Wide angle telescope, 0°, OD: 2,7 mm, WL: 19 cm, Twin connectors, comp. to video compact system – direct coupling –

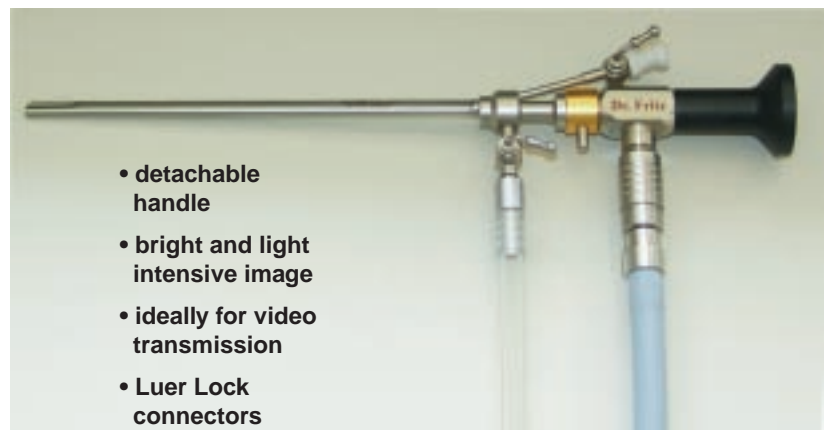


### Examination and Working Sheath,

with 2,2 mm instrument channel

#### S190-2701

Examination & working sheath for 2,7 mm telescopes, 2,2 mm instrument channel, LL(fem) connectors for irrigation, special design for rhinoscopy and otoscopy



### Biopsy and Grasping Forceps

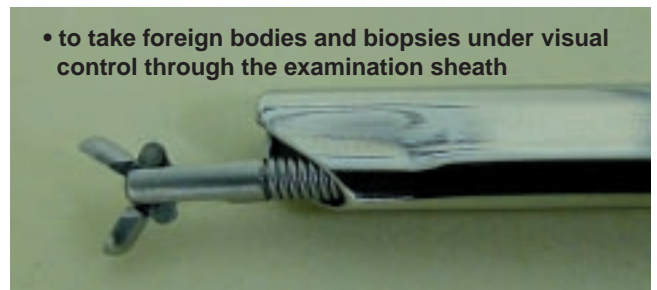
compatible to examination sheath and video vaginoscope

**B18-32** Flexible grasping forceps, OD: 1,8 mm, 28 cm

**B18-33** Flexible biopsy forceps, OD: 1,8 mm, 35 cm comp. to rhinoscope and vaginoscope

**K-3325-60** Transportation case for rhinoscopy set and accessories, 33x25x6 cm

• to take foreign bodies and biopsies under visual control through the examination sheath



**Additionally for gynaecological and urological field**

**Special-Catheter**

Teflon, autoclavable, malleable

- F11-69** Special catheter 4 Fr., 69cm, selectip UK, olive end, angled tip, y-sterile, Juka 62410110
- F12-69** Special catheter 5 Fr., 69cm, selectip UK, olive end, angled tip, y-sterile, Juka 62410210
- F13-69** Special catheter 6 Fr., 69cm, selectip UK, olive end, angled tip, y-sterile, Juka 62410310
- F16-50** Special catheter OD:1,6mm, 50cm y-sterile, autoclavable,  
– sterile items, no refund possible –



**Trocars, Protection Sheaths**

Additionally for laparoscopy in birds and exotics

- I-18-519** Egress cannula, with sharp trocar, stopcock, ID:4mm, WL:7cm,



**Biopsy and Grasping Forceps**

Instruments for minor procedures through a second portal



**B20-130**



**B20-135**

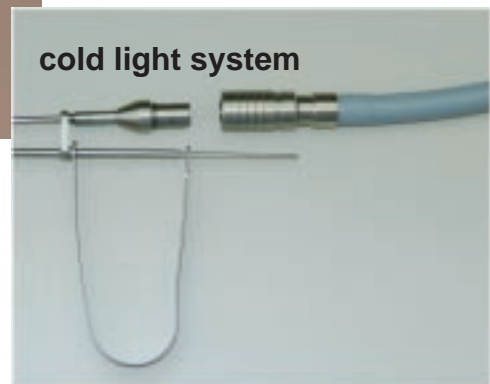
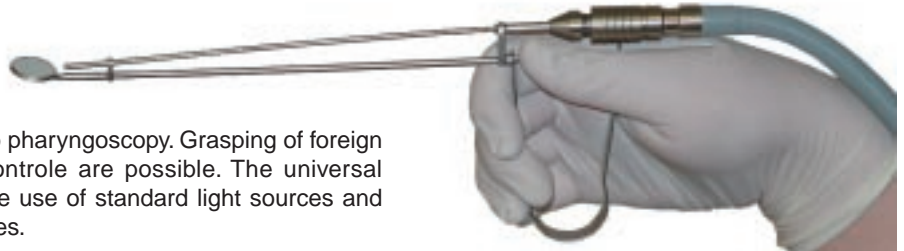


- B20-130** Biopsy forceps, OD:1,8 mm, WL:13 cm
- B20-135** Grasping forceps, small, OD:1,8 mm, 13 cm

## Mirror system with integr. cold light fibers

for post rhinoscopy in cats and dogs

Until now examination of retro pharynx was only possible for clinics and hospitals with good endoscopic equipment. The newly developed deflecting mirror system allows the average practice to perform retro pharyngoscopy. Grasping of foreign bodies or taking biopsies under visual control are possible. The universal connector of the cold light carrier allows the use of standard light sources and cables or even batterie operated light handles.



**E-24-2166 Choanae mirror, compl., 10°-70° movement, consisting of:**  
 E-24 Choanen/Pharynx cold light carrier, 21 cm  
 E-24-21 Choanae mirror

**E-20-0 Pharyngo cold light carrier, WL: 20 cm compatible to Dr. Fritz, HSW, Wolf**

**E-20-S** same as above, however compatible to Storz/Olympus

### Accessories:



**E-22-2 Epiglot double hook, 16 cm, for cats and middle sized dogs**

**E-22-3 Epiglot hook, large size, 20 cm, for large dogs**

**E-22-71 Antifrog fluid for endoscopes and mirrors, btl. with 10 ml**

**K-3325-61 Special transportation case, 33x25x6 cm for post rhinoscopy set, complete**

● Please ask us for a special quotation for your practice